



Ballards Lane, London, N3

Finchleys are pleased to offer this spacious 2 double bedroom / 2 bathroom apartment located in the heart of Finchley Central above shops.

The apartment boasts spacious accommodation throughout and also benefits for a private terrace and off street parking for one car.

Offered Unfurnished.

**£1,850**  
Per Calendar  
Month

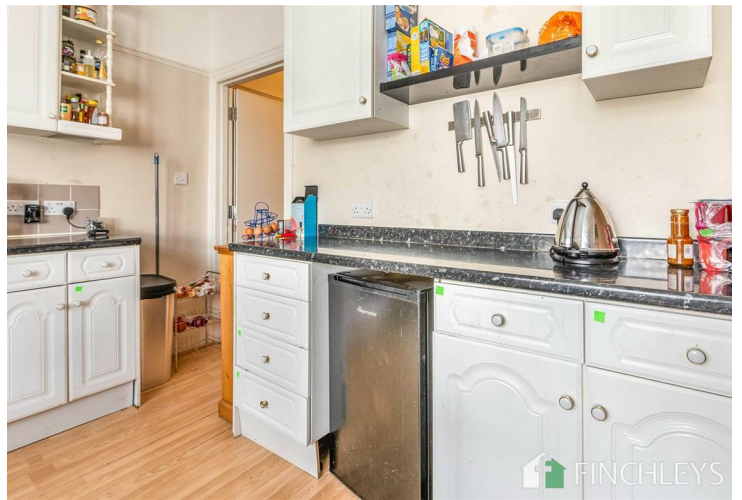
2  2  1  C 



**FINCHLEYS  
ESTATES**

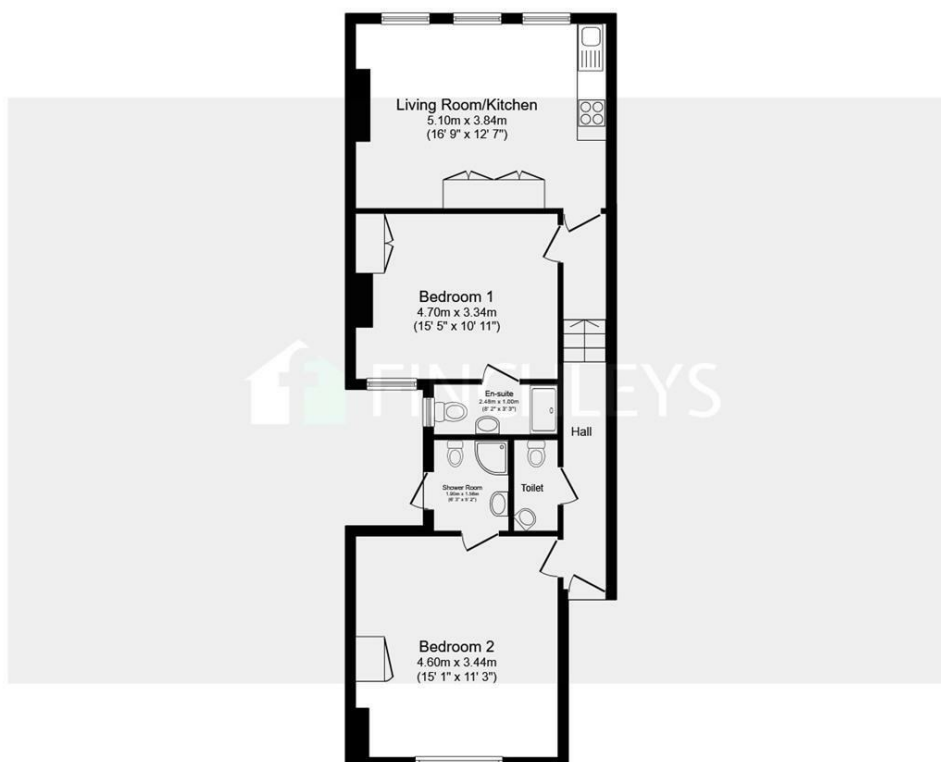
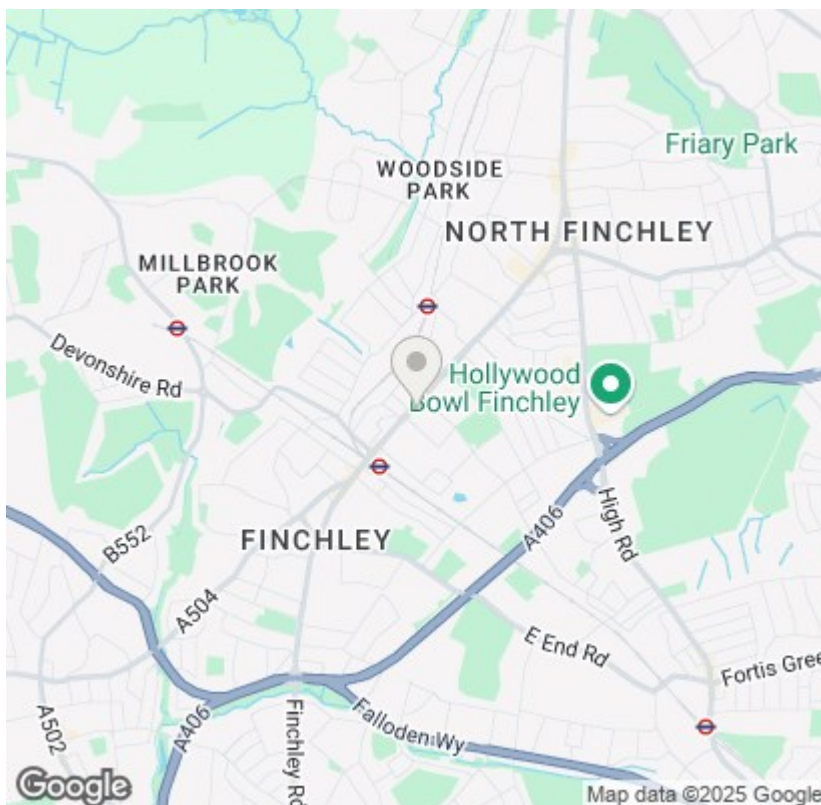
CLIENT FOCUSED. RESULTS DRIVEN.







- Great Location - 2 Mins to Finchley Central Tube
  - 2 Double Bedrooms
  - 2 Ensuite Shower Rooms
- Off Street Parking for 1 Car
  - Private Terrace
  - Unfurnished



Total floor area 70.5 sq.m. (759 sq.ft.) approx

This floor plan is for illustrative purposes only. It is not drawn to scale. Any measurements, floor areas (including any total floor area), openings and orientation are approximate. No details are guaranteed, they cannot be relied upon for any purpose and they do not form part of any agreement. No liability is taken for any error, omission or misstatement. A party must rely upon its own inspection(s).  
 Powered by [www.focalagent.com](http://www.focalagent.com)



11 STATION ROAD  
FINCHLEY  
LONDON  
N3 2SB  
02083461180